

M1281-Q

8MP Multi-Algorithm Box Camera

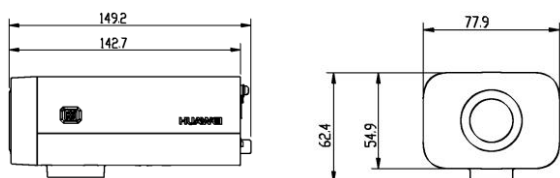


Features

- 1/1.8" progressive scan CMOS
- AI-enabled scene adaptation. The camera can identify scenes in real time and make targeted setting optimization to improve imaging quality.
- Detection and capture of faces, persons, and vehicles in scenes with mixed objects
- Intelligent object detection algorithms based on deep learning. The camera can detect up to 50 objects at a time, including motor vehicles, non-motor vehicles, and pedestrians.
- Simultaneous extraction of multiple types of structured data, such as faces, persons, and vehicles
- Facial attribute recognition and personal attribute recognition
- License plate, vehicle type, and vehicle color recognition
- Vehicle brand, sub-brand, and model year recognition
- Recognition of new-energy license plates and unlicensed vehicles
- Software-defined camera, supporting online loading and upgrade of algorithms
- Area cropping, allowing users to view fine details at a limited bandwidth
- Stream smoothing, meeting various requirements for video quality and fluency
- Traffic shaping, enabling precise control over instantaneous burst of video streams and delivering smooth video without packet loss
- TCP acceleration, enabling the network to carry video streams of higher quality

Dimensions

Unit: mm



Recommended Accessories

Specifications

| Product Model | M1281-Q |
|------------------------------------|--|
| Camera | |
| Image sensor | 1/1.8" 8-megapixel progressive scan CMOS |
| Effective pixels | 3840 x 2160 |
| Minimum illumination | Color: 0.005 lux (F1.2, AGC ON, 1/30s shutter speed) B/W: 0.0005 lux (F1.2, AGC ON, 1/30s shutter speed) |
| Day/Night mode | Automatic ICR, color, or B/W |
| Shutter speed | 1/68250s to 1/3s |
| Gain control | Auto/Manual |
| Wide dynamic range (WDR) | 120 dB, physical WDR |
| Backlight compensation (BLC) | Supported (BLC area is selectable) |
| Highlight Compensation (HLC) | Supported |
| Image defogging | Auto/Manual/Off |
| White balance | Auto tracking/Auto/Manual/ |
| Digital noise reduction (DNR) | 2D/3D noise reduction |
| Focus assistance | Supported |
| Lens | |
| Lens mount | CS-mount |
| Iris type | DC-Iris |
| Function | |
| Video encoding format | H.265 / H.264 / H.264 smart codec / MJPEG |
| Maximum resolution | 3840 x 2160 |
| Frame rate | 1 fps to 30/25/20 fps |
| Multi-channel encoding | Five streams, supporting 1080p encoding for secondary streams |
| Area cropping encoding | 4-channel encoding (secondary streams) |
| Intelligent encoding | Extra265/264 |
| Audio encoding format | G.711a/G.711u/G.726/OPUS/ACC |
| Camera connection protocol | ONVIF Profile S/G/T, GB/T 28181-2011/2016, GAT 1400-2017, and GB 35114-2017 |
| Network protocol | TCP, UDP, IPv4, IPv6, DHCP, DHCPv6, DNS, ICMP, ICMPv6, IGMP, HTTPS, FTP, SFTP, RTP, RTSP, RTCP, SIP, ARP, SSL, NTP, SNMP, 802.1X, QoS, DDNS, SMTP, SSH, and TLS |
| Security mode | User name and password authentication, 802.1X, HTTPS digital certificate, and flood attack prevention |
| Network intrusion alarm | Brute force attack detection, unauthorized super user detection, and botnet detection |
| Media security | KMC key encryption, AES256-based stream encryption, and digital watermark |
| Alarm linkage | Alarm source: motion detection/lens blocking/Boolean value input/intelligent analysis alarms Linked action: Boolean value output/preset position/tour track/scan/SD card-based recording/SD card-based snapshot/email sending/pre-recording |
| Intelligent Function | |
| Exception detection | Video quality diagnosis, audio existence detection, sudden volume increase or decrease detection, scene change detection, and defocus detection |
| Intelligent analysis | |
| Intelligent capture mode switching | Supports switching among the following four modes: object classification, face checkpoint, vehicle checkpoint, and situation awareness. |
| Object classification | Classification and capture of motor vehicles, non-motor vehicles, and pedestrians |
| Vehicle analysis | Recognition of license plates, vehicle types, colors, brands, sub-brands, model years, license plates for new-energy vehicles, and unlicensed vehicles; traffic flow statistics |
| Secondary vehicle feature analysis | Seat belt infractions, handsfree device infractions, sun visor, annual inspection sticker, hanging accessory, tissue box; driver/front passenger face capture |
| Vehicle event detection | Motor vehicles on non-motor vehicle lanes, non-motor vehicles on motor vehicle lanes, illegal backing, wrong-way driving, marked lanes violation, parking violation, parking detection |
| Person detection | Simultaneous detection and optimal snapshot of face, head and shoulder, and person |
| Personal attribute analysis | 5 facial attributes (for example, whether wearing a mask); 7 personal attributes (for example, gender, age, and tops style); rider attribute analysis; customer flow statistics |
| Behavior analysis | Fast movement detection, abandoned object detection, removed object detection, tripwire crossing detection, intrusion detection, area entry/exit detection, and loitering detection |
| Crow flow analysis | Head counting, queue length detection, crowd density detection, crowd gathering detection, and heat map |
| Port | |
| Network port | One RJ-45 10M/100M adaptive Ethernet port |
| Communication serial port | One RS-485 port |
| Alarm port | 1 alarm input port and 1 alarm output port |
| Audio port | 1 audio input port and 1 audio output port |
| Storage port | One microSDHC/microSDXC card slot, supporting a maximum capacity of 256 GB |
| General Specifications | |
| Power supply | 12 V DC, 24 V AC, PoE+ (IEEE 802.3at) |
| Power consumption | Maximum: 9 W; Typical: 7.5 W |
| Operating temperature | -40°C to +60°C |
| Operating humidity | 5% to 95% (non-condensing) |
| Surge protection level | 4 kV |
| Weight (excluding lens) | Net: 0.5 kg; gross: 0.7 kg |
| Dimensions (excluding lens) | Product (H x W x D): 149.2 mm x 78.0 mm x 62.5 mm; Packing (H x W x D): 230 mm x 125 mm x 108 mm |

IPC6256-VRZ

5MP Network IR Bullet Camera

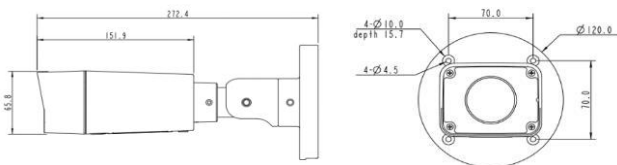


Features

- 1/2.7" 5.0 megapixel progressive scan CMOS
- A maximum of 30fps stream at 5.0 megapixel with H.265 real-time encoding
- H.265, H.264 and MJPEG video compression standard
- Wide dynamic range up to 120dB
- Defogging
- Built-in motorized zoom and focus lens
- Max. 50 meters IR coverage
- Super error concealment (SEC)
- Streams encrypted through AES
- Ultra wide operating voltage range, ultra wide operating temperature range
- DC and POE power supplies

Dimension

Unit : mm



Optional Accessories



Pole-mount bracket
DTS-11C



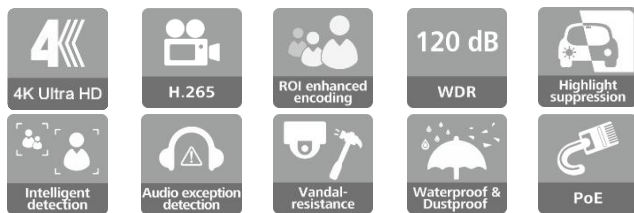
Connection box
ACC2501-HW

Specifications

| Model Item | IPC6256-VRZ |
|------------------------------|--|
| Camera | |
| Image sensor | 1/2.7" 5.0 megapixel progressive scan CMOS |
| Effective pixels | 2560(H)×1920(V) |
| Min. Illumination | Color: 0.005lux (F1.2, AGC ON) B/W : 0.001lux (F1.2, AGC ON), 0 lux with IR on |
| Day/Night mode | Automatic ICR/Color/Monochrome |
| Wide Dynamic Range | 120dB |
| White balance | Auto/Auto-track/Manual |
| Highlight suppression | Supported |
| Defog | Automatic/Manual |
| Digital noise reduction | Self-adaptive to 2D or 3D DNR |
| Lens | |
| Focal Length | 2.8-12mm |
| Infrared radiation distance | 50 m |
| Function | |
| Video compression | H.265 / H.264 / H.264 Smart Codec / MJPEG |
| Max. resolution | 2560(H)×1920(V) |
| Frame rate | 60Hz:30fps(2560×1920, 2560×1440, 2048×1536, 1920×1080) 50Hz:25fps(2560×1920, 2560×1440, 2048×1536, 1920×1080) |
| Multiple streaming | Three streams |
| PU access protocol | ONVIF Profile S/G/T,GB/T 28181 and HUAWEI SDK |
| Network protocol | TCP, UDP, IPv4, IPv6, DHCP, DHCPv6, DNS, ICMP, ICMPv6, IGMP, HTTPS, FTP, SFTP, RTP, RTSP, RTCP, SIP, ARP, SSL, NTP, SNMP, 802.1x, QoS, DDNS, SMTP, SSH, TLS |
| Security mode | User name and password authentication, 802.1x, HTTPS digital certificate |
| Stream encryption | Stream encryption using the AES256 encryption algorithm, and digital watermark |
| Alarm action | Alarm source: moving detection alarm, tampering detection/boolean value input value/intelligent analysis alarm Linked object: Boolean value output/SD card recording/SD card snapshot/Pre-recording |
| Intelligent analytics | |
| Behavior analysis | Fast-moving object detection, abandoned object detection, removed object detection, cross line detection, intrusion detection, area enter/exit detection, loitering detection |
| Exception Detections | Audio existence detection, detection of sudden sound increase or decrease, scene change detection and defocus detection |
| Interface | |
| Ethernet interface | 1x RJ45 10/100 Base-T self-adaptive Ethernet port |
| Alarm interface | 1-channel alarm input and 1-channel alarm output |
| Audio | 1-channel audio input and 1-channel audio output |
| Memory card slot | 1x MicroSD/SDHC/SDXC slot supporting memory card up to 128 GB |
| General Parameter | |
| Power supply | DC12V ± 25%, PoE(IEEE 802.3at) |
| Power consumption | Typical 3 W, maximum 15 W |
| Operating temperature | -30°C~60°C (IR off) -30°C~40°C (IR on) |
| Operating humidity | 5% to 95% (non-condensing) |
| Surge suppression | 6kV surge voltage |
| IP protection class | IP67 |
| Vandal-proof class | IK10 |
| Weight | Net weight: 1.4 kg, gross weight: 2 kg |
| Dimensions | Equipment: 272.4×84.1×66.0 mm; packaging: 400.0×200.0×136.0 mm |

IPC6284-VRZ

4K UHD Intelligent Network IR Bullet Camera

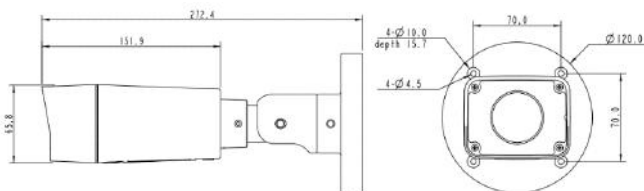


Features

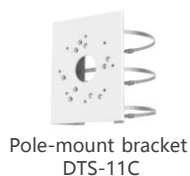
- Up to 4K(3840×2160) Ultra HD resolution
- A maximum of 30fps stream at 4K resolution for H.264/H.265 encoding
- Ultra WDR up to 120 dB for superb detail environments with high contrast between light and dark areas
- Highlight suppression, preserving the key information from strong headlights
- Intelligent defog, significantly improving visibility
- Intelligent behavior analytics, Face detection
- Advanced cyber-security measures, preventing against tampering, eavesdropping and virus spreading
- Ultra wide operating voltage range: ±25%
- IP67 Ruggedized Housing

Dimension

Unit: mm



Optional Accessories



Specifications

| Product model | IPC6284-VRZ |
|-------------------------|---|
| Camera | |
| Image sensor | 1/2.5" 8MP progressive scan CMOS |
| Effective pixels | 3840×2160 |
| Min. Illumination | Color: 0.08lux (F1.5, AGC ON) B/W : 0.08lux (F1.5, AGC ON), 0 lux with IR on |
| Day and night | Automatic ICR/Color/Monochrome |
| Shutter time | 1/3s ~1/68250s |
| Gain control | Auto/Manual |
| WDR | 120dB |
| BLC | Supported |
| Highlight suppression | Supported |
| Image stabilization | Electronic image stabilization |
| Defog | Automatic/Manual |
| White balance | Auto/Auto-tracking/Manual/One-off calibration |
| Digital noise reduction | 2D/3D DNR |
| IR coverage | 30m |
| Lens | |
| Focal length | 3.7-12.8mm, horizontal field of view: 88°(Wide) ~ 28°(Tele) |
| Aperture | F1.5 to F3.3 |
| Auto-Iris | P-iris |
| Function | |
| Video compression | H.265 / H.264 / H.264 Smart Codec / MJPEG |
| Frame rate | 60Hz : 30/20 to 1fps ; 50Hz : 25/20 to 1fps |
| Video bit rate | 32Kbps to 16Mbps |
| Multiple streaming | Three streams |
| Audio compression | G.711a/G.711u/G.726/OPUS |
| Stream transmission | Treble streams, super error concealment, traffic shaping |
| System integration | ONVIF Profile S/G, Genetec Protocol v1.00, HUAWEI SDK TCP , UDP , IPv4 , IPv6 , DHCP , DHCPv6 , DNS , DNSv6 , ICMP , ICMPv6 , IGMP , HTTP , HTTPS , FTP , SFTP , RTP , RTSP , RTCP , SIP , ARP , SSL , NTP , SNMP (V1/V2/V3) , 802.1x , QoS , DDNS , SMTP PKI-CA, SSL/UDPS VPN tunnel encryption, VPN tunnel access isolation (These features requires support from Huawei network security solutions.) |
| Network protocol | |
| Advanced cyber-security | |
| Basic cyber-security | User 3-level authentication, 802.1x authentication, and EAP-TLS, HTTPS digital certificate, IP address filtering |
| Media security | AES256 encryption algorithm, and Digital Watermark |
| Intelligent analytics | Fast-moving object detection, Crossing line detection, abandoned/removed object detection, loitering detection, intrusion detection, face detection, color recognition, vehicle and pedestrian classification |
| Intelligent detections | Face detection, motion detection, tampering detection, exception audio detection, audio loss detection |
| Alarm actions | External alarm output, SD card recording, snapshot and pre- recording |
| Interface | |
| Ethernet interface | 1x 10M/100M RJ-45 Ethernet interface |
| Alarm interface | 1-channel alarm input and 1-channel alarm output |
| Audio interface | 1-channel audio input and 1-channel audio port |
| Memory interface | 1x MicroSD slot supporting memory card up to 128 GB |
| General | |
| Power supply | DC12V±25%, PoE(IEEE 802.3at) |
| Power consumption | Typ.4.8W , Max.15.6W |
| Operating temperature | -40 to 60°C |
| Operating humidity | 5% to 95% (non-condensing) |
| Railway application | EN 50121-4 and EN 50125-3 |
| Surge suppression | 6kV surge voltage , complying with IEC 61000-4-5 |
| IP protection class | IP67, complying with IEC 60529 |
| Vandal-proof Class | IK10 vandal-proof metal casing, complying with IEC 62262 |
| Anti-corrosion | Satisfies 10 days salt spray test, complying with IEC60068-2-11 |
| Net weight | 1.50 kg |
| Gross weight | 2.00 kg |
| Physical dimensions | 272.4×84.1×66.0 mm |
| Packing dimensions | 400.0×200.0×136.00 mm |

IPC6355-VRZ

5MP Network IR Dome Camera

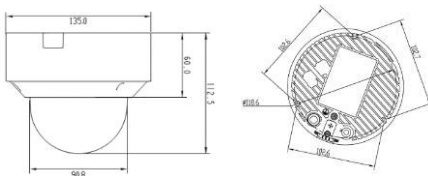


Features

- 1/2.7" 5.0 megapixel progressive scan CMOS
- A maximum of 30fps stream at 5.0 megapixel with H.265 real-time encoding
- H.265, H.264 and MJPEG video compression standard
- Wide dynamic range up to 120dB
- Defogging
- Built-in motorized zoom and focus lens
- Max. 50 meters IR coverage
- Super error concealment (SEC)
- Streams encrypted through AES
- Intelligent IR control
- Ultra wide operating voltage range, ultra wide operating temperature range
- PoE and DC power supplies

Dimension

Unit : mm



Optional Accessories



DTS-08C



DTS-09C

Specifications

| Model Item | IPC6355-VRZ |
|------------------------------|--|
| Camera | |
| Image sensor | 1/2.7" 5.0 megapixel progressive scan CMOS |
| Effective pixels | 2560(H)×1920(V) |
| Min. Illumination | Color: 0.005lux (F1.2, AGC ON) B/W : 0.001lux (F1.2, AGC ON), 0 lux with IR on |
| Day/Night mode | Automatic ICR/Color/Monochrome |
| White balance | Auto/Auto-track/Manual |
| Wide Dynamic Range | 120dB |
| Highlight suppression | Supported |
| Defog | Automatic / Manual |
| Digital noise reduction | Self-adaptive to 2D or 3D DNR |
| Lens | |
| Focal Length(Zoom Ratio) | 2.8-12 mm |
| Infrared radiation distance | 50 m |
| Function | |
| Video compression | H.265 / H.264 / H.264 Smart Codec / MJPEG |
| Max. resolution | 2560(H)×1920(V) |
| Frame rate | 60Hz:30fps(2560×1920 , 2560×1440 , 2048×1536 , 1920×1080) 50Hz:25fps(2560×1920 , 2560×1440 , 2048×1536 , 1920×1080) |
| Multiple streaming | Three streams |
| PU access protocol | ONVIF Profile S/G/T, GB/T 28181 and HUAWEI SDK |
| Network protocol | TCP, UDP, IPv4, IPv6,DHCP, DNS, ICMP, IGMP, HTTP, HTTPS, SFTP, RTP, RTSP, RTCP, SIP, ARP, SSL, NTP, SNMP(V1/V2/V3), 802.1x, QoS, DDNS,SSH,TLS |
| Security mode | User name and password authentication, 802.1x , HTTPS digital certificate |
| Stream encryption | AES256 encryption algorithm, and Digital Watermark |
| Alarm action | Alarm source: moving detection alarm, tampering detection/boolean value input value/intelligent analysis alarm Linked object: Boolean value output/SD card recording/SD card snapshot/Pre-recording |
| Intelligent Analytics | |
| Behavior analysis | Fast-moving object detection, abandoned object detection, removed object detection, cross line detection, intrusion detection, area enter/exit detection, loitering detection, head counting |
| Exception Detections | Audio existence detection, detection of sudden sound increase or decrease, scene change detection and defocus detection |
| Interface | |
| Ethernet interface | 1x RJ-45 10/100Base-T self-adaptive Ethernet port |
| Alarm interface | 1-channel alarm input and 1-channel alarm output |
| Audio interface | 1-channel audio input and 1-channel audio output |
| Memory card slot | 1x MicroSD/SDHC/SDXC slot supporting memory card up to 128 GB |
| General Parameter | |
| Power supply | DC12V ± 25%, PoE(IEEE 802.3at) |
| Operating temperature | -30°C~60°C (IR off) , -30°C~40°C (IR on) |
| Operating humidity | 5% to 95% (non-condensing) |
| Lightning surge suppression | 4kV surge voltage |
| IP protection class | IP67 |
| Vandal-proof Class | IK10 |
| Weight | Net weight: 1.1 kg, gross weight: 1.4 kg |
| Dimensions | Equipment: φ135*112.5 mm; packaging: 260.0×195.0×148.0 mm |

C6620-Z33

2MP Starlight Infrared PTZ Dome Camera



Features

- 1/2.7" 2-megapixel CMOS
- Support for intrusion detection, heat map, parking detection, and other detections
- Support for automatic tracking
- Support for video quality diagnosis
- Stream smoothing, meeting various requirements for video quality and fluency
- Traffic shaping, enabling precise control over instantaneous burst of video streams and delivering smooth video without packet loss
- TCP acceleration, enabling the network to carry video streams of higher quality

Specifications

| Product Model | C6620-Z33 |
|--------------------------------|--|
| Camera | |
| Image sensor | 1/2.7" 2-megapixel CMOS |
| Effective pixels | 1920 x 1080 |
| Minimum illumination | Color: 0.005 lux (F1.2, AGC ON, 1/30s shutter speed) B/W: 0.0005 lux (F1.2, AGC ON, 1/30s shutter speed) |
| Day/Night mode | Automatic ICR, color, or B/W |
| Shutter speed | 1/68250s to 1/3s |
| Gain control | Auto/Manual |
| Wide dynamic range (WDR) | 120 dB |
| Backlight compensation (BLC) | Supported (BLC area is selectable) |
| White balance | Manual/Automatic/Automatic tracking |
| Highlight Compensation (HLC) | Supported |
| Image defogging | Auto/Manual |
| Electronic image stabilization | Supported |
| Lens | |
| Focal length | 5–165 mm |
| Maximum aperture | F1.6 |
| Iris type | P-Iris |
| Effective radiation distance | 150 m |
| PTZ | |
| Rotation angle | Pan: 0° to 360°; Tilt: -15° to +90° |
| Pan speed | Manual: 0.1–160°/s; Preset position: 400°/s |
| Tilt speed | Manual: 0.1–120°/s; Preset position: 400°/s |
| Function | |
| Video compression format | H.265 / H.264 / H.264 Smart Codec / MJPEG |
| Maximum resolution | 1920 x 1080 |
| Multiple streams | Triple streams |
| Intelligent encoding | Extra265/264 |
| Audio encoding format | G.711a/G.711u/G.726/OPUS |
| Voice communication | Voice intercom and broadcast, channel-associated voice |
| Camera connection protocol | ONVIF Profile S/G/T, GB/T 28181 (2011, 2016), GB 35114-2017, HUAWEI SDK, and HUAWEI Rest API |
| Network protocol | TCP, UDP, IPv4, IPv6, DHCP, DHCPv6, DNS, ICMP, ICMPv6, IGMP, HTTPS, FTP, SFTP, RTP, RTSP, RTCP, SIP, ARP, SSL, NTP, SNMP (V1/V2/V3), 802.1X, QoS, and DDNS |
| Security mode | User name and password authentication, 802.1X, and HTTPS-based secure access |
| Media security | KMC key encryption, AES256-based stream encryption, and digital watermark |
| Alarm linkage | Boolean value, preset position, tour track, scan, SD card-based video recording and snapshot taking, email, and pre-alarm pre-recording |
| Intelligent Function | |
| Behavior analysis | Fast movement detection, abandoned object detection, removed object detection, tripwire crossing detection, intrusion detection, area entry/exit detection, and loitering detection. |
| Exception detection | Video quality diagnosis, audio existence detection, sudden volume increase or decrease detection, scene change detection, and defocus detection |
| Intelligent tracking | Auto tracking |
| Intelligent detection | Heat map and parking detection |
| Port | |
| RJ-45 port | One RJ-45 10M/100M adaptive Ethernet port |
| Alarm port | 2 alarm input ports and 1 alarm output port |
| Audio port | 1 audio input port and 1 audio output port |
| Storage port | MicroSD card slot that supports microSDHC/microSDXC; maximum memory card capacity: 256 GB |
| General Specifications | |
| Power supply | 24 V AC; PoE+ (IEEE802.3at) |
| Operating environment | -30°C to +60°C, 5% ~95% (non-condensing) |
| Ingress protection rating | IP66 |
| Surge protection level | 6 kV |
| Impact protection rating | IK10 (except the window) |
| Dimensions (H x W x D) | Device (Φ x H): 202 mm x 309 mm; Packing (H x W x D): 460 mm x 295 mm x 295 mm |